



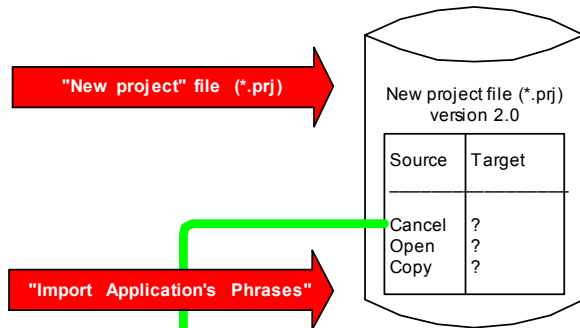
How to import Application Phrases

The function 'Import Application phrases' enables the user to define pairs of translated applications to be imported to the active project. *Visual Localize* compares the translations of the imported application to the ones of the current project. The following graphic explains the process of re-using existing translations more detailed:



For the pre-translation of a new localization project you can use any existing pair of application modules (*.exe,*.dll,*.ocx, *.xml,...). These application's modules must have the same program version and a different source and target language.

In the example below, a previous software version (v.1.3) in „English“ and „German“ language is used to receive a pre-translation for the new project file (on the right side).

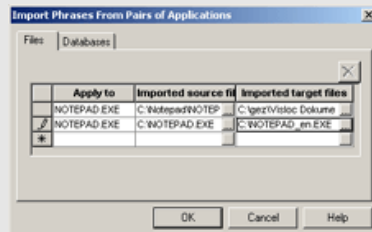


Import of application's phrases

When importing application's phrases, Visual Localize is searching for phrases with the identical ID. Each phrase in the source language module is mapped with its corresponding phrase in the target language module.
(See fig. on the right side)

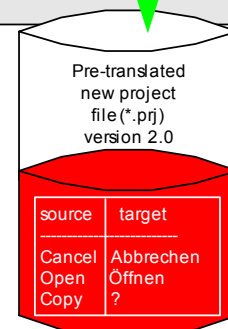
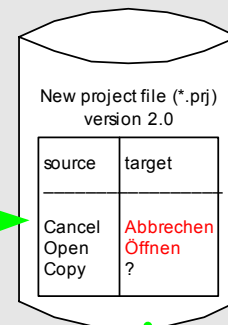
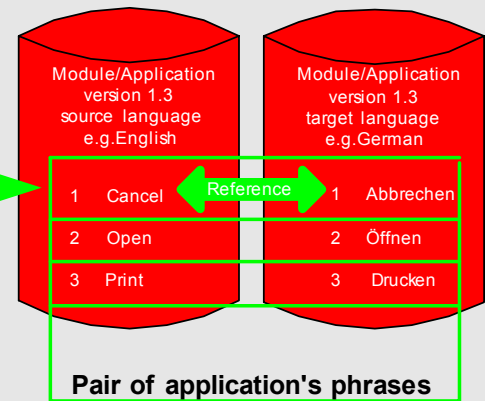
Importantnote:

The application's modules which shall be mapped must have exactly the same version.



In a second step Visual Localize searches for an identical pair of application's phrases within the mapped application's phrases.

If an identical pair of application's phrases exists in the previous program modules, Visual Localize imports the translation of these modules into the new project file.



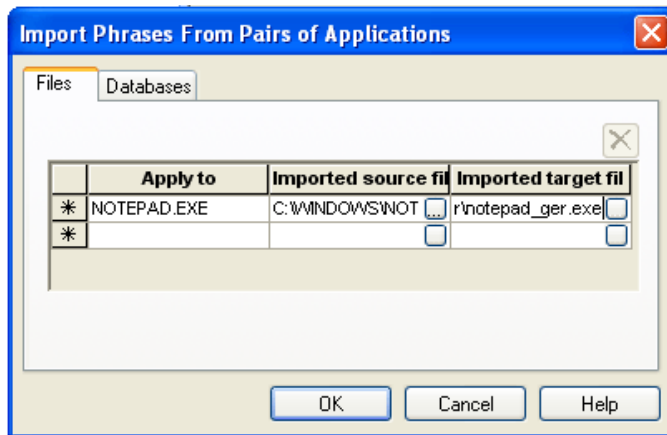
Tip:

In order to reach the highest grade of pre-translation, a previous software version of your application should be used.

Another possibility to get a pre-translated software is to use another theme related software.

Step 1/2: Import fo applications phrases

Select the menu item 'Import Application Phrases' from the menu 'Tools'. The following dialog appears:





Via the 'Files' tab DLL, EXE or XML files can be imported. Via the 'Databases' tab only databases can be imported.

Note: The option Databases is only available in the licensed version of the Database-Translation Engine or in the test version.

- Select the source file (module) you wish to import in the field 'Apply to'.
- Click in the input field with your mouse. An arrow appears to open a combo-box. Within this combo-box your project's modules are displayed. Select (mark) the module(s) you wish to import applications to.

Step 2/2: Select the pair of of application modules

- Enter the name and path of the source file you wish to import directly into the list field 'Imported source files' or click on the  button at the right end of the field to open a common 'Open file' dialog. Enter your file and click on the 'Open' button. The dialog 'Import Phrases from Pairs of Applications' appears again. Repeat the same steps for all source files you wish to import.
- Enter the name and path of the corresponding target file(s) you wish to import into the list field 'Imported target files' in the same way as described above.

Note: You can delete pairs of applications from the list field. To do so click on the pushbutton on the left side of the corresponding field to mark them. Then click on the delete  button on the right side above the list field to delete its marked entry.

- Click on the 'OK' button to start the import process.

Note: You can cancel the process of importing by pushing the 'ESC' key.

Note: Conflicts between imported entries and existing project entries may occur. Refer to chapter 'Conflict Resolution'.



- Click on the 'Cancel' button to close the dialog without importing any module.
- 'Help' displays help for this dialog.

Note: Changed dialog font styles (non standard) of the current project are always taken as default fonts.

Note: If the font styles of a current project have not been changed, the changed fonts of the imported application are used as default.